



Monarflex SP 400

Breather Membrane

Method Statement

DESCRIPTION

Monarflex SP 400 is a specially formulated spun bonded polypropylene with acrylic coating breather membrane designed for use as a secondary watershedding layer on a timber or steel frame construction.

PRODUCT DATA

Composition:	Co-polymer acrylic and Polypropylene
Size:	1.5m x 50m
Colour:	Black
Thickness:	0.4mm
Roll Weight:	9 kg
Water Vapour Transmission:	600 gm ⁻² day ⁻¹

Monarflex SP 400 is suitable for use with brick cladding, weatherboarding, tile-hanging and sheet cladding systems. It is, rot proof, extremely strong, as well as being light, easy to handle and simple to install.

Monarflex SP 400 will repel wind-driven rain or snow penetrating the outer cladding. It reduces draughts and air movement around the insulation, preserving the building's thermal efficiency throughout its lifetime.

Monarflex SP 400's high vapour permeability allows water vapour from within the structure to pass freely to the external cavity, where it can be removed by ventilation.

During construction Monarflex SP 400 forms a weatherproof covering to protect the timber and insulation components until the cladding is applied, and may be left exposed for periods of up to four months.

INSTALLATION

Install Monarflex SP 400 in accordance with the requirements of current Building Regulations and the recommendations of the various local standards.

Fit Monarflex SP 400 carefully in horizontal runs, ensuring it protects the lowest timbers in the wall and that it extends into the reveals of openings. The membrane should be returned a minimum of 300mm at external corners.

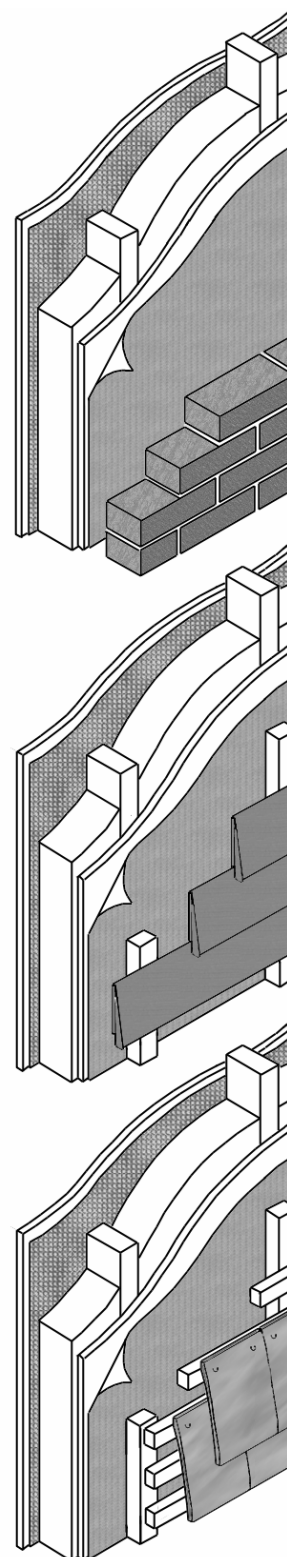
Fix to studding or sheathing board at a maximum 300mm centres using stainless steel staples or galvanised large head nails. At openings, panel edges and laps fix at 150mm centres.

Mark stud positions to ensure accurate fixing of wall ties or battens.

Lap upper layers at least 100mm over lower ones to ensure proper drainage of the construction.

Lap vertical joints of Monarflex SP 400 by 150mm, and stagger them wherever possible

For rectangular openings, Monarflex SP400 should be cut diagonally corner to corner across the full opening. The triangular shaped flaps should then be folded back into the opening to the inside and stapled into position.



Monarflex a/s

Lyskær 10
DK-2730 Herlev
Denmark

Telephone +45 44885550
Fax +45 44885599
www.monarflex.com